



BUILT FOR ROUGH TERRAIN



Maximal Rough Terrain
Forklift 1.8-5.0ton

2WD • Compact 4WD • 4WD



Hyster-Yale Maximal Forklift (Zhejiang) Co., Ltd

Address No.1, jinxin Road, Lushan Industrial
area, Fuyang, Zhejiang China

Tel 0086-571-28001566

0086-571-28935028

0086-571-28979902

Fax 0086-571-28001569

Email

For sales

info@maxforklift.com

For spare parts

parts@maxforklift.com

All rights reserved.

If any doubt, please contact us.



CE CERTIFICATE



ISO 14001:2004



ISO 9001:2000



Maximal Rough Terrain Forklift Introduction

2WD

Strong flexibility
in rough terrain

100% differential lock.



4WD

Superior performance
in extreme conditions

Traditional technology while
imported key components:
DANA integrated trans-axle,
Sauer Danfoss hydrostatic
system, tilting cabin.



Compact 4WD

Maximal original
product replenished
Rough Terrain fields



Patented self-designed axle &
transmission, compact size meet
with European standard.



Maximal Rough Terrain Forklift Introduction

Engine

World renowned brands engine for superior performance.

MITSUBISHI S4S

Rated output 35.3kw/2250rpm >

Rated torque 182N.m/1800rpm >



YANMAR 4TNE98

Rated output 42.1kw/2300rpm >

Rated torque 196.3N.m/1700rpm >



ISUZU 6BG1QC

Rated output 82kw/2000rpm >

Rated torque 416N.m/1400-1600rpm >



MITSUBISHI D04EG

Rated output 36kw/2250rpm >

Rated torque 177N.m/1800rpm >



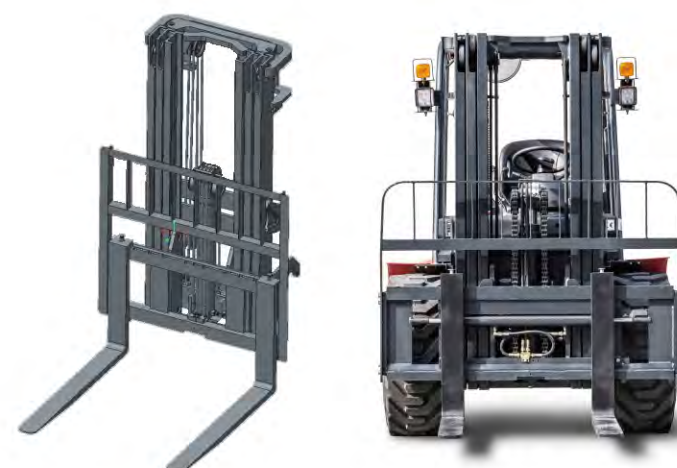
Floating System

A superior full floating overhead guard is installed with rubber damping instead of the traditional rigid design. This greatly reduces machine vibration and offers a smoother ride over rough terrain and reduces operator fatigue.



Wide-view Mast

Wide-view mast provides excellent through-the-mast visibility improving the work efficiency and allowing safe operation of the forklift.



High Quality Tyres

Industrial tyres with a wide footprint giving it greater stability and lift capacity in rough work environments.



High Ground Clearance

Offer greater maneuverability and keep the machine moving in the roughest of applications.



Tilting Overhead Guard (4WD)

Equipped as standard with a tilting overhead guard, to ensure easy access to major components for inspection and service.

Upward Steering Cylinder (Compact 4WD)

Lay the steering cylinder upward to make the turning radius smaller and rear wheel steering angle bigger.



100% Differential Lock (2WD)

Power shift transmission with jaw type 100% differential lock provides ultimate traction during inclement weather conditions and rough operating surfaces.





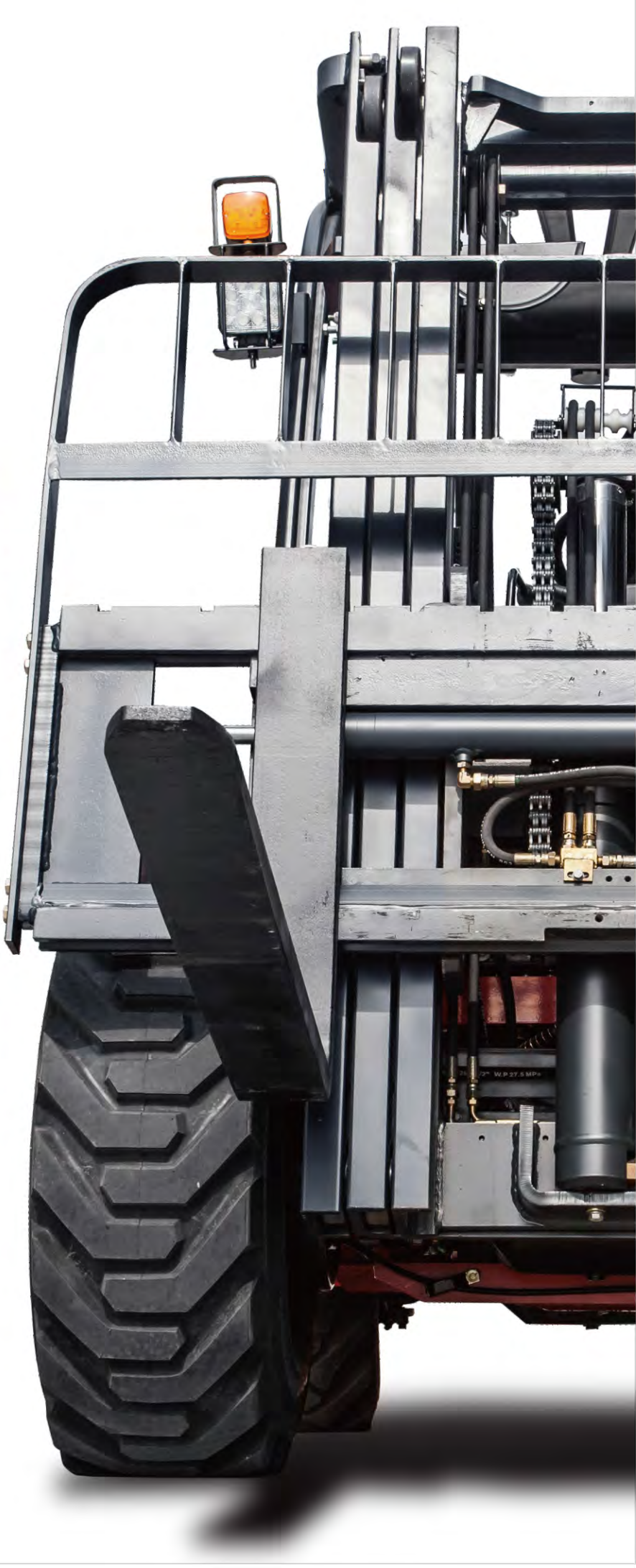
Our Solution, Your Decision

Body

Performance

	2WD				Compact 4WD			4WD	
YES ● / NO ●	1.8T	2.5T	3.5T	5T	1.8T	2.5T	3.5T	2.5T	3.5T
Floated Overhead Guard	●				●			●	
4WD-2WD Rocker Switch	—				●			●	
Industrial Tyres (F/R)	● / ●	● / ●	● / ●	● / ●	● / ●	● / ●	● / ●	● / ●	● / ●
Suspension Pedal	●				●			●	
Truck Width (mm)	1450	1557.5	1600	2067	1450	1450	1600	1980	1980
Loaded into 20GP Container	●	●	●	●	●	●	●	●	●
External Type Steering Cylinder	●				●			●	
With Prefilter	●				●			●	
LED Lights	Standard				Standard			Standard	
Safety Start System*	Standard				Standard			Standard	
Suspension Seat	Option				Option			Standard	
OPS system	Option				Option			Option	
Engine	YANMAR 4TNE98/MITSUBISHI S4S		YANMAR 4TNE98	ISUZU 6BG1QC	YANMAR 4TNE98 / MITSUBISHI S4S / MITSUBISHI D04EG			YANMAR 4TNE98	
Gradeability	20%	20%	16%	30%	80%/60%	50%	45%	38%	38%
Gradient	11.3°	11.3°	9°	16.7°	38.6°/31°	26.5°	24.2°	20.8°	20.8°
Min.Turning Radius(mm)	2840	2870	2870	3550	3120	3120	3120	4275	4295
Transmission Model	Hydraulic				Hydraulic			Hydrostatic	
Differential Lock Type	Jaw Type Differential Lock				Limited Slip Differential Lock			Limited Slip Differential Lock	
Differential Ratio	100%				45%			45%	

Safety Start System* The truck can't start if any below: 1-operator leaves the seat, 2-seatbelt unfastened, 3-hand brake released, 4-not in N position.



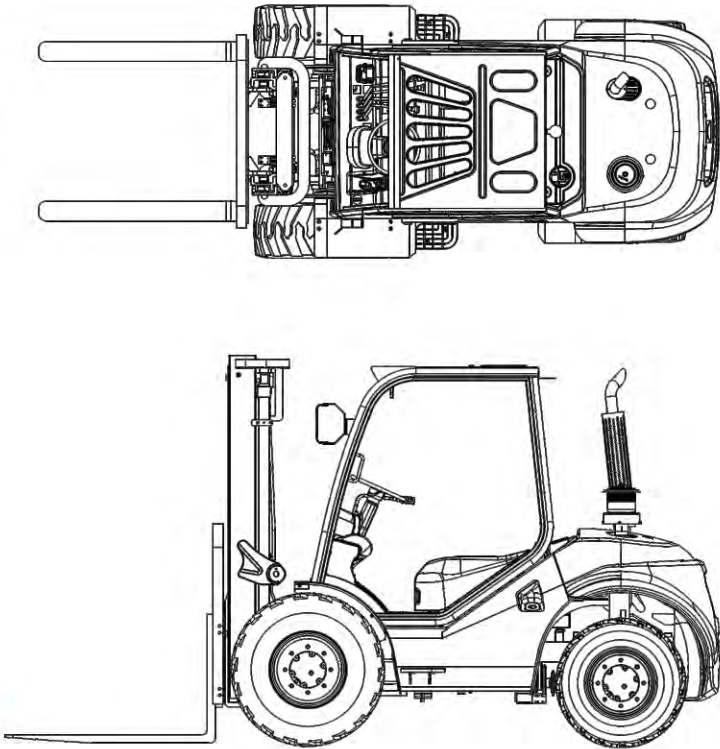
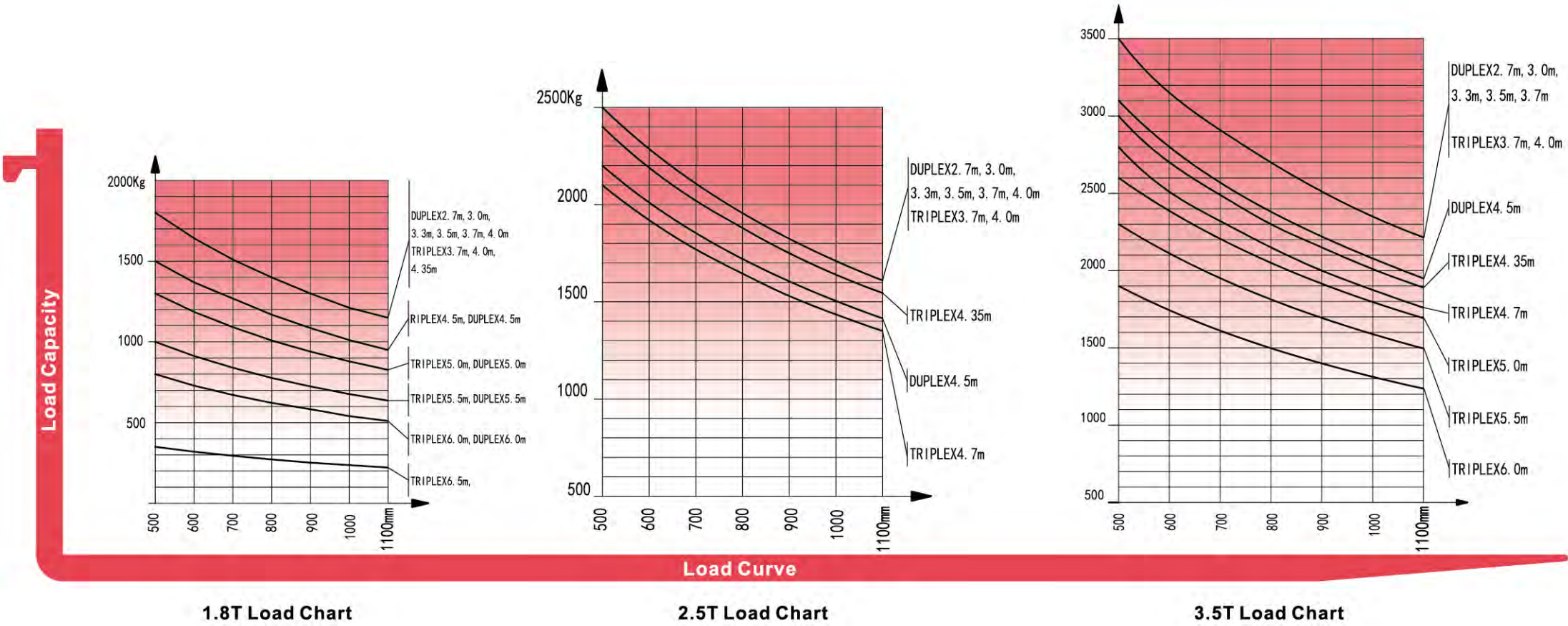
Forklift Specification

2WD 1.8T/2.5T/3.5T										
General	1	Model				FD18T-C2WE3		FD25T-C2WE3	FD35T-C2WE3	
	2	Power type				Diesel				
		Optional type				WV3				
	3	Rated capacity			Kg	1800		2500	3500	
Characteristic&Dimension	4	Load centre			mm	500		500	500	
	5	Lifting height			mm	3000		3000	3000	
	6	Free lift			mm	105		160	165	
	7	Fork size	L×W×T		mm	1070 × 100 × 35		1070 × 122 × 40	1070 × 125 × 45	
	8	Fork regulating range	Min./Max.		mm	200-1315		250-1160	250-1160	
	9	Mast tilt angle	F/R		Deg	10/12		10/12	10/12	
	10	Front overhang			mm	509		586	601	
	11	Rear overhang			mm	520		520	520	
	12	Min.ground clearance(drive steer axle)			mm	270		270	270	
	13	Overall dimensions	Length to face of fork (without fork)		mm	2910		2946	2956	
	14		Overall width		mm	1440		1557.5	1600.5	
	15		Mast lowered height		mm	2148		2265	2330	
	16		Mast extended height (with backrest)		mm	4150		4175	4305	
	17	Overall dimensions	Overhead guard height		mm	2256.5		2256.5	2276	
	18		Turning radius			mm	2840		2870	2870
19	Min. right angle stacking aisle width		Pallet size a ₁₂ =1000,b ₁₂ =1200		mm	4550		4726	4741	
			Pallet size a ₁₂ =1200,b ₁₂ =800		mm	4350		4856	4871	
Performance	20	Min. right angle stacking aisle width(pallet size a ₁₂ =1200,b ₁₂ =1200)			mm	2560		2870	2870	
	21	Speed	Travel(Laden/Unladen)		Km/h	20/19		20/18	22/22(WE3)/20/18(WV3)	
	22		Lifting(Laden)		mm/sec	610(WE3)/590(WV3)		570(WE3)/480(WV3)	450(WE3)/385(WV3)	
	23		Lowering(Laden)		mm/sec	450		450	450	
Tyre	24	Max. Drawbar pull(Laden)			KN	15		17(WE3)/15(WV3)	17(WE3)/15(WV3)	
	25	Max. Gradeability(Laden)			%	20		20	16	
	26	Tyre	Front			12-16.5-12PR		12-16.5-12PR	14-17.5-14PR	
	27		Rear			27 × 10-12-12PR		27 × 10-12-12PR	27 × 10-12-12PR	
	28	Tread	Front		mm	1125		1250.5	1250.5	
29	Rear		mm	1185		1205	1205			
Weight	30	Wheelbase			mm	1880		1880	1880	
	31	Self weight			kg	3700		4465	5180	
	32	Weight Distribution	Laden	Front axle		kg	4730		5990	7725
	33			Rear axle		kg	770		975	955
	34		Unladen	Front axle		kg	1480		1785	2070
	35			Rear axle		kg	2220		2680	3110
	36	Battery	Voltage/Capacity			V/Ah	12/90			
Power&Transmission	37	Engine	Model			4TNE98-BQFLC		S4S-455		
	38		Manufacture			YANMAR		MITSUBISHI		
	39		Rated output/r.p.m.		Kw	42.1/2300		35.3/2300		
	40		Rated torque/r.p.m.		N.m	186-206/1700		170 ± 8/1700		
	41		No. of cylinder			4		4		
	42		Bore×Stroke		mm	98 × 110		94 × 120		
	43		Displacement		L	3.318		3.331		
	44		Fuel tank capacity		L	55		55		
	45	Transmission	Manufacture			China				
	46		Type			YQXD30MKS	YQXD30MKS	YQXD40MKS		
	47		Stage	F/R			1/1			
	48	Operating pressure			Mpa	20				

Compact 4WD 1.8T/2.5T/3.5T											
General	1	Model			FD18T-C4WE3		FD25T-C4WE3		FD35T-C4WE3		
	2	Power type					Diesel				
		Optional type					WV3/W(6)3				
	3	Rated capacity		kg	1800		2500		3500		
	4	Load centre		mm	500		500		500		
Characteristics&Dimension	5	Free lift height		mm	3000		3000		3000		
	6	Free lift		mm	105		160		165		
	7	Fork size	L×W×T	mm	1070×100×35		1070×122×40		1220×122×45		
	8	Fork regulating range		mm	200-1315		250-1310		250-1500		
	9	Mast tilt angle		Deg	10/12		10/12		10/12		
	10	Front overhang		mm	520		586		601		
	11	Rear overhang		mm	600		600		600		
	12	Min.ground clearance(drive steering axle)		mm	219		219		219		
		Min.ground clearance(chassis) (Unladen/Laden)		mm	230/215		230/215		224/230		
		Min.ground clearance(mast) (Unladen/Laden)		mm	275/250		270/255		270/250		
		Ground clearance (drawbar pin)		mm	354.5		354.5		430		
		Height from seat surface to overhead guard inner side		mm	990		990		1043		
	13	Overall dimensions	Length to face of fork(without fork)	mm	3000		3066		3081		
	14		Overall width	mm	1450		1450		1600		
	15		Mast lowered height	mm	2145		2235		2330		
	16		Mast extended height(with backrest)	mm	4140		4175		4305		
	17		Overhead guard height	mm	2256		2256		2276		
	18	Turning radius		mm	3120		3120		3120		
	19	Min. right angle stacking aisle width	Pallet size a ₁₂ =1000,b ₁₂ =1200	mm	4629		4706		4921		
			Pallet size a ₁₂ =1200,b ₁₂ =800	mm	4829		4906		4871		
20	Min. right angle stacking aisle width(pallet size a ₁₂ =1200,b ₁₂ =1200)		mm	2670		2670		2725			
Performance	21	Speed	Type		WV3/W(6)3	WE3	WV3/W(6)3	WE3	WV3/W(6)3	WE3	
	22		Travel(Unladen/Laden)	km/h	18/17	20/19	18/17	20/19	18/17	19/18	
	23		Lifting(Unladen/Laden)	mm	630/590	640/610	620/570	650/600	480/450	510/485	
	24		Lowering(Unladen/Laden)	mm	420/450	420/450	510/450	510/450	500/450	500/450	
		Max. Drawbar pull(Unladen/Laden)		KN	31	38	38	38	27	38	
25	Max. Gradeability(Unladen/Laden)		%	50	80	50	50	30	45		
Tyre		Braking distance		m	≤6						
	26	Tyre	Front		12-16.5-12PR		12-16.5-12PR		14-17.5L-14PR		
	27		Rear		10.0/75-15.3		10.0/75-15.3		10.0/75-15.3		
		Tyre pressure(Front/Rear)		MPa	0.62/0.55		0.62/0.55		0.55/0.55		
	28	Tread	Front	mm	1123		1123		1250		
29	Rear		mm	1190		1190		1190			
	Ground clearance (Front tyre centre)(Unladen/Laden)		mm	405.5/385		405.5/385		450.5/425			
	Ground clearance (Rear tyre centre)(Unladen/Laden)		mm	370/350		370/350		370/385			
Weight	30	Wheelbase		mm	1880		1880		1880		
		Self weight		kg	4255		4830		5545		
	32	Weight Distribution	Laden	Front Axle	kg	4602		6597		7872	
	33			Rear Axle	kg	1453		733		1073	
	34		Unladen	Front Axle	kg	1702		2173		2345	
35	Rear Axle			kg	2553		2657		3100		
Power&Transmission	36	Battery	Voltage/Capacity		V/Ah	12/90					
	37	Engine	Model			S4S	D04EG	4TNE98-BQFLC			
	38		Manufacture			MITSUBISHI	MITSUBISHI	YANMAR			
	39		Rated output/r.p.m.		Kw	35.3/2250	36/2250	42.1/2300			
	40		Rated torque/r.p.m.		N.m	182/1800	177/1800	186-206/1700			
	41		No. of cylinder			4	4	4			
	42		Bore×Stroke		mm	94×120	94×120	98×110			
	43		Displacement		L	3.31	3.331	3.318			
	44		Fuel tank capacity		L	55					
	45	Transmission	Manufacture			China					
	46		Type			FSDT351					
	47		Stage	F/R		2/1					
	48	Operating pressure		MPa	16.5		20		20		

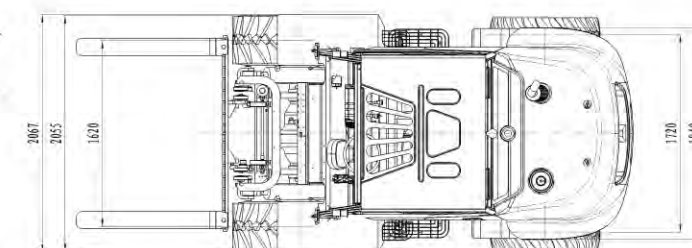
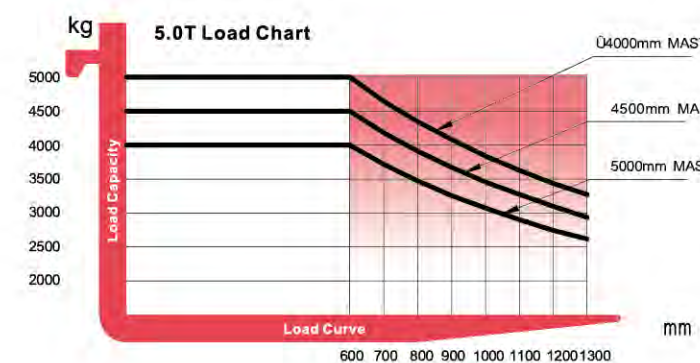
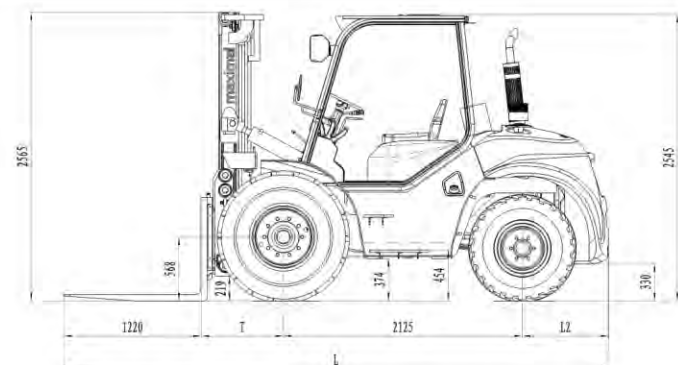
Mast Specification

Type	Model	Max. fork height	Overall height			Free lift						Front Overhang			Tilt range		Capacity at max. height							
			Lowered			With backrest			Without backrest						FWD		BWD		Loand Center 500mm					
																			Without side shift carriage			With side shift carriage		
			1.8T	2.5T	3.5T	1.8T	2.5T	3.5T	1.8T	2.5T	3.5T	1.8T	2.5T	3.5T	1.8T	2.5T	3.5T	1.8T	2.5T	3.5T	1.8T	2.5T	3.5T	
		mm	mm	mm	mm	mm	mm	mm	mm	mm	mm	mm	mm	mm	Deg	Deg	kg	kg	kg	kg	kg	kg		
wide view 2-stage mast	M330	3300	2298	2385	2480	105	160	165	105	160	165	509	585	600	10°	12°	1800	2500	3500	1800	2500	3200		
	M350	3500	2398	2485	2580	105	160	165	105	160	165	509	585	600	10°	12°	1800	2500	3500	1800	2500	3200		
	M370	3700	2498	2585	2680	105	160	165	105	160	165	509	585	600	10°	12°	1800	2500	3500	1800	2500	3200		
	M400	4000	2698	2785	2880	105	160	165	105	160	165	509	585	600	10°	12°	1800	2500	3400	1800	2500	3100		
	M450	4500	2948	3035	3130	105	160	165	105	160	165	509	585	600	10°	12°	1500	2200	3100	1400	2100	2900		
	M500	5000	3198	—	—	105	—	—	105	—	—	509	—	—	6°	6°	1300	—	—	1200	—	—		
	M550	5500	3498	—	—	105	—	—	105	—	—	509	—	—	6°	6°	1000	—	—	900	—	—		
	M600	6000	3748	—	—	105	—	—	105	—	—	509	—	—	6°	6°	800	—	—	400	—	—		
Full free 3-stage mast	TFM400	4000	2033	2080	2205	850	888	890	1230	1333	1336	509	590	620	10°	12°	1800	2500	3400	1800	2400	3100		
	TFM435	4350	2158	2205	2330	980	1013	1015	1360	1458	1461	509	590	620	10°	12°	1800	2400	3000	1600	2200	2900		
	TFM450	4500	2208	—	—	1030	—	—	1410	—	—	509	—	—	10°	12°	1500	—	—	1400	—	—		
	TFM470	4700	—	2320	2445	—	1128	1130	—	1573	1576	—	590	620	—	—	—	2100	2800	—	1900	2500		
	TFM500	5000	2408	2455	2580	1230	1263	1265	1610	1708	1710	509	590	620	6°	6°	1300	1900	2600	1200	1600	2300		
	TFM550	5500	2573	2620	2745	1390	1428	1430	1770	1873	1875	509	590	620	6°	6°	1000	1500	2300	900	1200	2100		
	TFM600	6000	2758	2805	2930	1580	1613	1615	1960	2058	2060	509	590	620	6°	6°	800	1200	1900	400	800	1600		
TFM650	6500	2973	3020	3145	1790	1828	1830	2180	2273	2275	509	590	620	6°	6°	350	700	1300	200	400	1100			



2WD 5T								
General	1	Model				FD50T-C2W (3) 3	FD50T-C2WF3	
	2	Power type				Diesel	Diesel	
	3	Rated capacity			Kg	5000	5000	
	4	Load centre			mm	600	600	
Characteristic&Dimension	5	Lift height			mm	3000	3000	
	6	Free lift height			mm	145	145	
	7	Fork size	L×W×T		mm	1220*150*55	1220*150*55	
	8	Fork regulating range	Min./Max.		mm	300/1654	300/1654	
	9	Mast tilt angle	F/R		Deg	15° /15°	15° /15°	
	10	Front overhang			mm	732	732	
	11	Rear overhang			mm	764	764	
	12	Ground clearance	Bottom of mast		mm	320	320	
	13	Overall dimensions	Length to face of fork (without fork)		mm	3622	3622	
	14		Overall width		mm	2067	2067	
	15		Mast lowered height		mm	2565	2565	
	16		Mast extended height (with backrest)		mm	4170	4170	
	17		Overhead guard height		mm	2545	2545	
	18	Min. turning radius			mm	3550	3550	
	19	Min. right angle aisle width			mm	5700	5700	
Performance	20	Speed	Travel(Unladen)		Km/h	20/19	21/20	
	21		Lifting(Laden)		mm/s	380	420	
	22		Lowering(Laden)		mm/s	370	410	
	23	Max. Drawbar pull(Laden)			KN	50	50	
	24	Max. Gradeability(Loaden)			%	20	28	
Tyre	25	Tyre	Front			445-65-22.5PR	445-65-22.5PR	
			Rear			12.5/80-18	12.5/80-18	
	26	Tread	Front		mm	1620	1620	
			Rear		mm	1720	1720	
	27	Wheelbase			mm	2125	2125	
Weight	28	Self weight			kg	8450	8450	
	29	Axle distribution	Laden	Front axle		kg	11700	11700
				Rear axle		kg	1750	1750
	30		Unladen	Front axle		kg	3550	3550
	31			Rear axle		kg	4900	4900
	32							
Power&Transmission	33	Engine	Model			TCD 3.6 L4	6BG1QC	
	34		Manufacture			DEUTZ	ISUZU	
	35		Rated output/r.p.m.		Kw	55.4/2200-2300	82/2000	
	36		Rated torque/r.p.m.		N.m	390/1300	416/1400-1600	
	37		No. of cylinder			4	6	
	38		Bore×Stroke		mm	98×120	105×125	
	39		Displacement		L	3.6	6.494	
	40	Battery	Voltage/Capacity		V/Ah	2*12/80	2*12/80	
	41	Operating pressure			Mpa	20	20	

Type	Model	Max. fork height	Overall height Lowered	Free lift		Front Overhang	Tilt range		Capacity	
				With backrest	Without backrest	5.0T	FWD	BWD	capacity at max. height	
									Without side shift carriage	With side shift carriage
									5.0T	5.0T
		mm	mm	mm	mm	mm	Deg	Deg	kg	kg
wide view 2-stage mast	M330	3300	2715	145	145	732	15	15	5000	4700
	M350	3500	2815	145	145	732	15	15	5000	4700
	M370	3700	2915	145	145	732	15	15	5000	4700
	M400	4000	3115	145	145	732	15	15	5000	4700
	M450	4500	3365	145	145	732	15	15	4500	4050
	M500	5000	3615	145	145	732	15	15	4000	3600
Full free 3-stage mast	TFM400	4000	2560	1000	1350	765	15	15	5000	4500
	TFM435	4350	2685	1125	1475	765	15	15	4500	4050
	TFM450	4500	2736	1176	1526	765	15	15	4000	3600
	TFM470	4700	2802	1242	1592	765	15	15	3700	3350
	TFM500	5000	2935	1375	1725	765	10	15	3300	2950
	TFM600	6000	3300	1740	2090	765	10	15	2000	1800



Forklift Specification

4WD 2.5T/3.5T								
General	1	Model				FD25J-C4WE	FD35J-C4WE	
	2	Power type				diesel	diesel	
	3	Rated capacity			Kg	2500	3500	
	4	Load centre			mm	500	500	
Characteristic&Dimension	5	Lift height			mm	3000	3000	
	6	Free lift height			mm	160	165	
	7	Fork size	L×W×T		mm	1070×125×40	1220×125×45	
	8	Fork regulating range	Min./Max.		mm	250-1560	250-1560	
	9	Mast tilt angle	F/R		Deg	10/12	10/12	
	10	Front overhang			mm	680	680	
	11	Rear overhang			mm	590	597	
	12	Min.ground clearance			mm	394.5	410	
	13	Overall dimensions	Length to face of fork (without fork)		mm	3182	3227	
	14		Overall width		mm	1980	1980	
	15		Mast lowered height		mm	2454	2470	
	16		Mast extended height (with backrest)		mm	4270	4400	
	17		Overhead guard height		mm	2250	2250	
	18	Min. turning radius			mm	4275	4295	
	19	Min. right angle stacking aisle width(add load length and clearance)			mm	8375	8395	
Performance	20	Speed	Travel(Unladen)		Km/h	20	20	
	21		Lifting(Laden)		mm/s	540	450	
	22		Lowering(Laden)		mm/s	630	540	
	23	Max. Drawbar pull(Laden/unladen)			KN	34.3	34.3	
	24	Max. Gradeability(Laden)			%	38	38	
Tyre	25	Tyre	Front			405/70-20-14PR	405/70-20TL	
	Rear			10.0/75-15.3-14PR	10.0/75-15.3			
	26	Tread	Front		mm	1570	1570	
	Rear		mm	1440	1440			
	27	Wheelbase			mm	1950	1950	
Weight	28	Self weight			kg	4900	5750	
	29	Weight Distribution	Laden	Front axle		kg	6290	7990
	Rear axle			kg	1110	1260		
	31		Unladen	Front axle		kg	2265	2450
	Rear axle			kg	2635	3300		
Power&Transmission	33	Battery	Voltage/Capacity			V/Ah	12/90	
	34	Engine	Model				4TNE98-BQFLC	
	35		Manufacture				YANMAR	
	36		Rated output/r.p.m.			Kw	42.1/2300	
	37		Rated torque/r.p.m.			N.m	196.3/1700	
	38		No. of cylinder				4	
	39		Bore×Stroke			mm	98×110	
	40		Displacement			L	3.319	
	41		Fuel tank capacity			L	3.319	
	42	Transmission	Manufacture				DANA	
	43		Type	Front axle			112	
	44			Rear axle			211	
	45			Transfer case			311	
	46	Stage	F/R			1/1		
	47	Static system pressure			Mpa	40		
	48	Operating pressure(For attachments)			Mpa	20		
	49	Min.right angle stacking aisle width			mm	2980	3000	

Mast Specification

Type	Model	Overall height		Free lift				Front Overhang		Tilt range		Capacity			
		Lowered		With backrest		Without backrest		2.5T	3.5T	FWD	BWD	capacity at max. height			
		2.5T	3.5T	2.5T	3.5T	2.5T	3.5T					Without side shift carriage		With side shift carriage	
		mm	mm	mm	mm	mm	mm					2.5T	3.5T	2.5T	3.5T
wide view 2-stage mast	M270	2320	2320	165	165	165	165	700	700	10	12	3500	3500	3200	3200
	M330	2620	2620	165	165	165	165	700	700	10	12	3500	3500	3200	3200
	M350	2720	2720	165	165	165	165	700	700	10	12	3500	3500	3200	3200
	M370	2820	2820	165	165	165	165	700	700	10	12	3500	3500	3200	3200
	M400	3020	3020	165	165	165	165	700	700	10	12	3400	3400	3100	3100
Full free 3-stage mast	M450	3270	3270	165	165	165	165	700	700	10	12	3100	3100	2900	2900
	TFM370	2255	2255	798	798	1243	1243	700	700	10	12	3500	3500	3100	3100
	TFM400	2345	2345	888	888	1333	1333	700	700	10	12	3500	3500	3100	3100
	TFM435	2470	2470	1013	1013	1458	1458	700	700	10	12	3000	3000	2900	2900
	TFM470	2605	2605	1128	1128	1573	1573	700	700	10	12	2800	2800	2500	2500
	TFM500	2720	2720	1263	1263	1708	1708	700	700	6	6	2800	2800	2500	2500
	TFM550	2885	2885	1428	1428	1873	1873	700	700	6	6	2500	2500	2300	2300
	TFM600	3070	3070	1613	1613	2058	2058	700	700	6	6	2100	2100	1800	1800

